

Find your self-sufficient PV system!  
With the largest selection of aesthetic PV kits

Double glass modules  
for maximum stability  
and durability!

Premium PV Modules



PV Carports



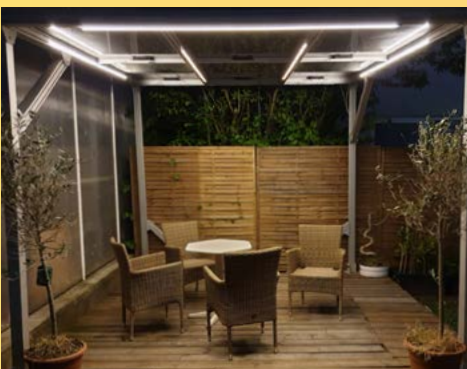
e-Mobility



PV Terraces



PV Accessoires



AgriPV



PV PowerWall



Large PV Installations



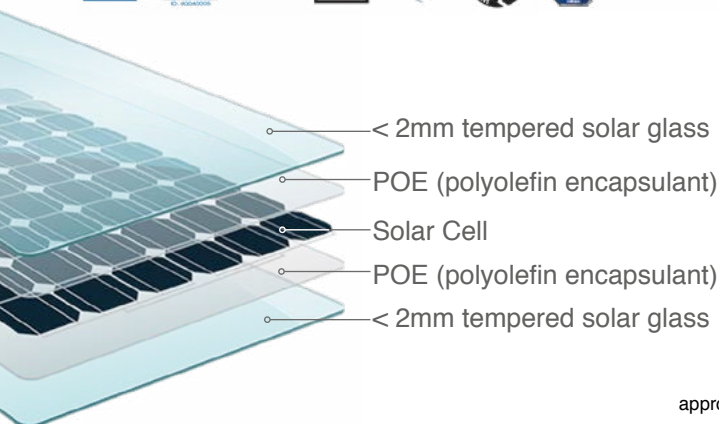
PV Power Plants





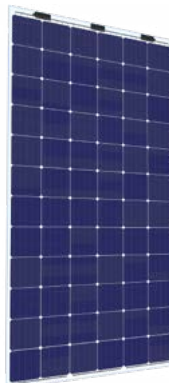


CERTIFIED TO  
IEC61215 / IEC61730



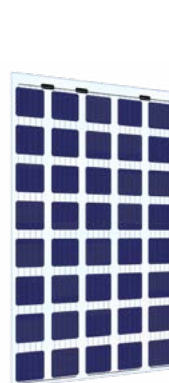
**M60**  
60 Mono cells  
320 Wp

**B60 Bifacial**  
60 Bifacial cells  
320 Wp

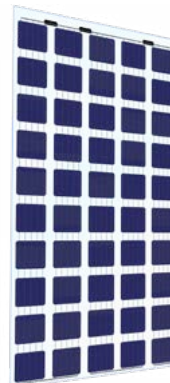


**M72**  
72 Mono cells  
380 Wp

**B72 Bifacial**  
72 Bifacial cells  
380 Wp



**M40**  
40 Mono cells  
200 Wp



**M50**  
50 Mono cells  
250 Wp

approx. 1656 x 990 x 5 mm

1980 x 990 x 5 mm

1662 x 990 x 5 mm

1980 x 990 x 5 mm



Due to the integrated rubber lips in the aluminium cover profile and the screw connection with the substructure, the cover profile is pressed onto the lower rubber profile. This creates a tight and transparent PV roof.



## PV Carports



optional integrated rain gutter for easy mounting



### Carport M-L (6 x Modules size 2)



Size (in m, approx.)  
4,01 x 3,10 x 2,23 x 1,93

Modules	6 x M72
Total output	ca. 2.2 kW
Annual yield**	2420 kWh

### Carport L (9 x Modules size 1)



Size (in m, approx.)  
5,05 x 3,10 x 2,37 x 1,93 m

Modules	9 x M60
Total output	ca. 2.8 kW
Annual yield**	2970 kWh

### Carport XXL (15 x Modules size 1)



Size (in m, approx.)  
5,05 x 5,11 x 2,37 x 1,93

Modules	15 x M60
Total output	ca. 4.8 kW
Annual yield**	5100 kWh

### Carport 3XL (18 x Modules size 1)



Size (in m, approx.)  
5,05 x 6,11 x 2,37 x 1,93

Modules	18 x M60
Total output	ca. 5.8 kW
Annual yield**	6100 kWh

### Carport 4XL (21 x Modules size 1)



Size (in m, approx.)  
5,05 x 7,12 x 2,37 x 1,93

Modules	21 x M60
Total output	ca. 6.7 kW
Annual yield**	7100 kWh

All carports also available with a depth of 6 m with size 2 modules

\*\*Munich, Germany

# PV Terraces



Terrace LEA	LEA 2	LEA 3	LEA 4	LEA 5*	LEA 6*
<b>A</b> 203 cm, <b>C</b> 241 cm <b>B</b>	209 cm	310 cm	410 cm	510 cm	611 cm
PV Modules size 2 e.g. M50 with 250 Wp	2	3	4	5	6
Total output	500 Wp	750 Wp	1000 Wp	1250 Wp	1500 Wp
Annual yield**	550 kWh	825 kWh	1100 kWh	1375 kWh	1650 kWh



Terrace EVA	EVA 2	EVA 3	EVA 4	EVA 5*	EVA 6*
<b>A</b> 334 cm, <b>C</b> 241 cm <b>B</b>	209 cm	310 cm	410 cm	510 cm	611 cm
PV Modules size 1 e.g. M40 with 200 Wp	4	6	8	10	12
Total output	800 Wp	1200 Wp	1600 Wp	2000 Wp	2400 Wp
Annual yield**	880 kWh	1320 kWh	1760 kWh	2200 kWh	2640 kWh



Terrace MILA	MILA 2	MILA 3	MILA 4	MILA 5*	MILA 6*
<b>A</b> 397 cm, <b>C</b> 241 cm <b>B</b>	209 cm	310 cm	410 cm	510 cm	611 cm
PV Module Gr. 2 z.B. M50 mit 250 Wp	4	6	8	10	12
Total output	1000 Wp	1500 Wp	2000 Wp	2500 Wp	3000 Wp
Annual yield**	1100 kWh	1650 kWh	2200 kWh	2750 kWh	3300 kWh

**Additional sets for all terraces (can be combined as desired)**



Terrace CARO	CARO 2	CARO 3	CARO 4	CARO 5*	CARO 6*
<b>A</b> 499 cm, <b>C</b> 241 cm <b>B</b>	209 cm	310 cm	410 cm	510 cm	611 cm
PV Module Gr. 1 z.B. M40 mit 200 Wp	6	9	12	15	18
Total output	1200 Wp	1800 Wp	2400 Wp	3000 Wp	3600 Wp
Annual yield**	1320 kWh	1980 kWh	2640 kWh	3300 kWh	3960 kWh

\*Heavy duty profile, cross-section: 80x160 mm

\*\*Munich, Germany

## PV PowerWall



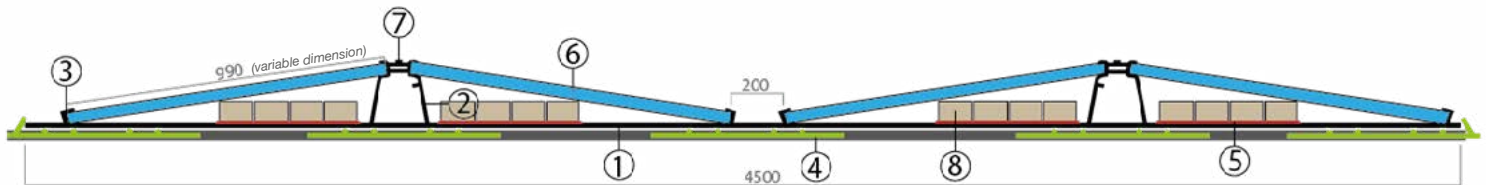
Our **PowerWall®** enables virtually double the yield: Both those from agricultural use and from a substantial electricity yield (see photo left).

It also has a double benefit as a partition wall or railing (see photo right). The bifacial modules used generate electricity on the front and back.










GridParity has developed a highly efficient installation system for the use of our premium PV modules with low production costs for the electricity generated. Our examples show an plant installation on the roofs of a wellness hotel in Germany with a total power of 712 kWp.



- |                      |                           |   |
|----------------------|---------------------------|---|
| ① Medium Profile     | ④ Building protection mat | ⑦ Clamping plate  |
| ② Pylon              | ⑤ Ballast Sump            | ⑧ Concrete blocks (LxWxH: 200x100x80 mm, Weight: approx.3.6 kg) |
| ③ Variable Foot Part | ⑥ Module (with frame)     |   |



## Charging technology

				
cable length: 3m / 5m				
Wall Charger (7kW / 22kW) 6 - 32 A 1- or 3-phase	Wall Charger (22 kW) 32 A 3-phase	Wall Charger (2 x 11kW / 2 x 22kW) 32 A 3-phase	Charging station (2 x 11kW / 2 x 22kW) 32 A 3-phase	e-bike Charger 4 sockets 230V / 10A

Comfortable and easy to use home wallboxes for your vehicle. From now on, you don't have to look for a smart charging station near your area, you can bring it right into your home.

WiFi connection and Smart features ensure comfortable usage of the wallbox, using a mobile app. The Plug Type 2 connector is suitable for every commonly used electric car.

More information you'll find in our Product Catalogue



No liability for errors. Changes are possible without prior notice. Our general terms and conditions apply.